



DraftSight Deployment Tool

V1R5.1

(for DraftSight 2015 onwards)



3DEXPERIENCE

Version 2.0 - 3/11/2014

Written by: L. Fernandes

Executive Summary

This booklet is aimed at CAD Managers or LAN Managers, responsible for the maintenance of software.

Installing a new software or keeping it up to date can be quite a task if you have an environment with multiple users. Even more if security restrictions limit the users permissions, or if following internal processes, these tasks are assigned to a single person or IT Team.

In order to make this process as simple as possible, we made available the DraftSight Deployment Tool. This tool allows to deploy a DraftSight Enterprise/Premium installation to groups of users, with minimal impact in their operations and minimal user input.

This document aims to be used as a guide for users that want to broadcast DraftSight to multiple users. More information can also be found in the Help files in the application.

Note: The current version of the DraftSight Deployment Tool only broadcasts the application, not settings or Support files used in or with the application.

Contents

1. The DraftSight Deployment Tool 4

1.1. Overview 4

1.2. Preparing the Deployment 4

1.2.1. Review System Requirements 5

1.2.2. Licensing Requirements..... 5

1.2.3. Administrative Permissions Requirements 6

1.2.4. General Considerations 6

1.2.5. What do you need..... 7

2. Using the DraftSight Deployment Wizard 7

2.1. Creating the Deployment Image 7

2.2. Tips 12

..... 13

1. The DraftSight Deployment Tool

This section provides advice and instructions on how to prepare the deployment of DraftSight to multiple users in a network environment.

We recommend the reading of this section prior to the creation of your Deployment Package.

In this Section you can find information/advice on

- What to consider prior to deploying DraftSight
- Planning the Deployment
- General considerations

1.1. Overview

The DraftSight Deployment Wizard allows you to deploy a DraftSight Install to multiple users, without the need to perform the install individually on each machine: The Tool creates an executable file (administrative image) and then deploys the installation to clients by pointing the clients to the file via an email link

The User interface is accessible, and the process takes only a few mouse clicks. To guarantee a successful deployment, before you start the process, it's important that you review a set of considerations, and prepare some information you will need to provide to the application.

NOTE: The DraftSight Deployment Wizard only deploys/installs the DraftSight Premium Version. In the current version, only the application is deployed, and the deployment package does not include Support files (customizations, User profiles, or other support files and or file paths set/used by DraftSight). In the event of a version update, we recommend that you backup their customizations/files, prior to the deployment.

1.2. Preparing the Deployment

A requirement for the deployment is having the License Manager application installed on the machine that will act/acts as the License Server. The License Manager should be configured, and have a valid License file enrolled (DSLS) or an Activated DraftSight Premium Serial Number (SNL).

It is not a requirement that you run the Deployment Wizard on your License Server machine.

1.2.1. Review System Requirements

Check if the computers on which you are going to install DraftSight meet the system requirements. Not meeting the system requirements might cause performance issues or errors when using DraftSight. For the current DraftSight Version (DraftSight 2015 SP1):

- ▶ **Minimum System Requirements:**
 - ▶ 32-bit version: Microsoft® Windows Vista®, Windows 7, or Windows 8
 - ▶ 64-bit version: : Microsoft® Windows® 7, or Windows 8
 - ▶ Intel® Pentium® 4 processor (2 GHz or faster)
 - ▶ 300 MB free hard disk space depending on accessory applications installed
 - ▶ 2 GB RAM
 - ▶ High Color (16 bit) graphics card
 - ▶ XGA (1024 x 768) display
 - ▶ Mouse
- ▶ **Recommended System Requirements:**
 - ▶ 32-bit version: Microsoft® Windows® 7, or Windows 8
 - ▶ 64-bit version: Microsoft® Windows® 7, or Windows 8
 - ▶ Intel Core™ 2 Duo, AMD Athlon™ X2 Dual-Core processor, or better
 - ▶ 1 GB free hard disk space depending on accessory applications installed
 - ▶ 4 GB RAM
 - ▶ 3D Graphics accelerator card
 - ▶ 22 inch display
 - ▶ Wheel mouse

1.2.2. Licensing Requirements

The DraftSight Deployment Tool can be used in environments/setups using SNL (SolidNetwork License Manager) or DSLS (Dassault Systemes License Manager). Please note that the DraftSight 2015 and higher require the following License Manager versions for licensing :

- ▶ the SNL version required is SNL 2015 SP0 or later
- ▶ the DSLS version required is DSLS R2014x or later

For more information on the license manager application requirements and or features, please refer to the application specific guide/documentation.

1.2.3. Administrative Permissions Requirements

We recommend that the DraftSight installation/deployment is performed by a user with administrator permissions. You do not need to have domain administrative permissions, but you need to guarantee that users have access to the Network Share folder where the deployment package will be available, and during the deployment stage, users have permissions to run the package/install DraftSight locally. If necessary, create the necessary exceptions in your Security Software, Also consider the communication between Client machines and License Server.

1.2.4. General Considerations

There are a few points, often overlooked when deploying software in network environments, that later on might cause problems. A quick overlook of the process, what it involves, and also what comes after the deployment/installation of the software, might prevent these problems from occurring. Make a Checklist with the information/data/settings you need to verify, not only to make sure that your deployment goes smoothly, but also that once deployed, your users are able to run DraftSight without any problem. Planning your deployment, and verifying if all the conditions for success are gathered, will help you prevent that issues arise at a later stage.

- Which workstations will require the installation? Since they will be “competing” for Licenses, do you have enough Licenses available for the “key workstations?”
- Check System Requirements of the Client machines where DraftSight will run. Is the Operating System, and Device Drivers updated? Are any upgrades required?
- Is your License Manager installed and configured? Is it fully operational?
- Do you have the information required for Licensing ready to be provided to the Client machines? (Servername:LicensingPort)
- Can the Client machines communicate with the License Server machine?
- Do you need to create exceptions in your Security/Network Settings?
- Have you identified the Network Location where the deployment package will be located for distribution? Can the Client machines access that Network location? Can Users access the Network location?
- Do you have the latest DraftSight Version available? (the latest DraftSight Version can be downloaded from <http://www.3ds.com/products/draftsight/download-draftsight/>)

1.2.5. What do you need

- ▶ The DraftSight installer (available in the [DraftSight Product page](#))
- ▶ A valid DraftSight Premium entitlement (Serial Number or License file).
- ▶ License Server information (name and port number).

NOTE: DraftSight has specific installers for 32bit and 64bit platforms. Make sure you download and use the correct installers when creating the deployment images. If your environment includes 32bit and 64bit machines, you will need to create a specific deployment package for each.

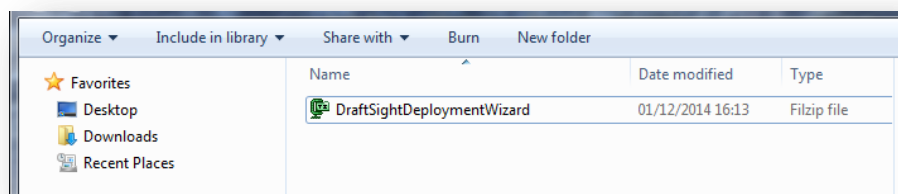
2. Using the DraftSight Deployment Wizard

The DraftSight Deployment Wizard allows you to broadcast the DraftSight Premium Version, to multiple workstations/users. The features of the application are:

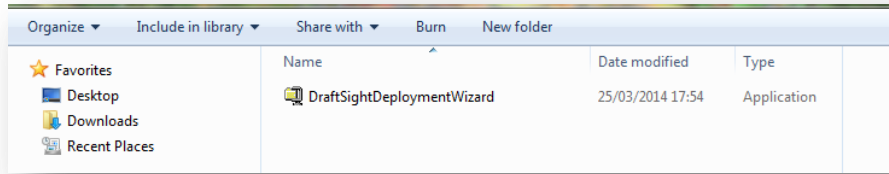
- ▶ Ability to create MSI administrative images
- ▶ Ability to set a non-default installation path for DraftSight
- ▶ Broadcast to Client machines information to be used in the Licensing process (Server name and and Port number)
- ▶ Ability to create a link to the executable file, to be shared/broadcasted to your users and used to broadcast/install the application.

2.1. Creating the Deployment Image

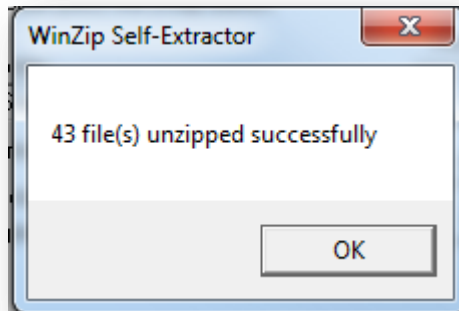
- 1- Download the DraftSight Deployment Wizard from the Shared Workspace, using the link in the email provided.
- 2- Double-click in the file downloaded
- 3- Double-click in the application



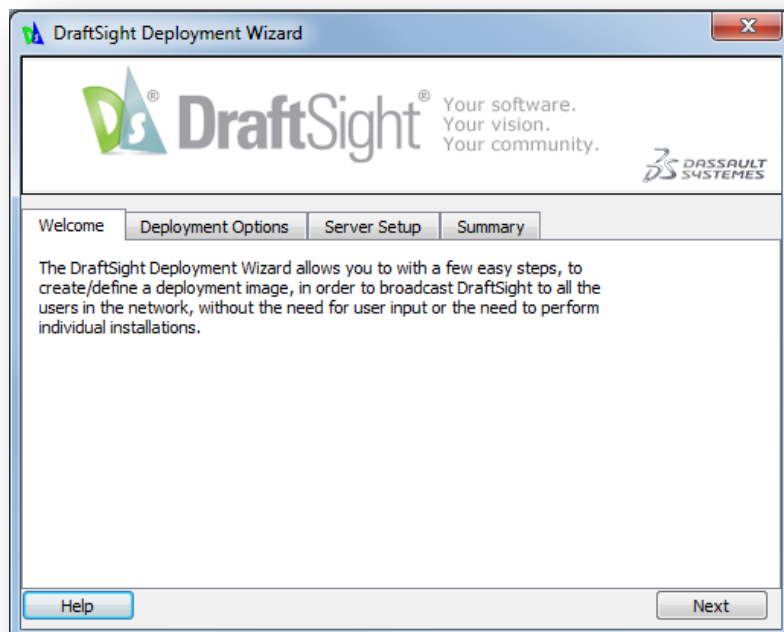
- 4- "Drag and drop" or Unzip the file to the desired location



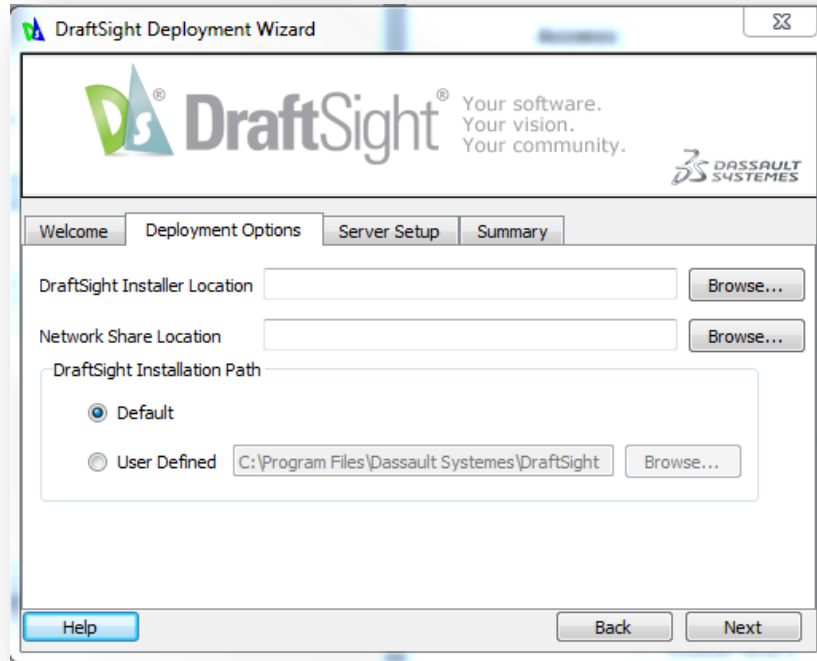
Note: The Unzip Default path is **C:\swdist\DraftSightDeploymentWizard**



5- Once unzipped, Click OK, and the application is launched

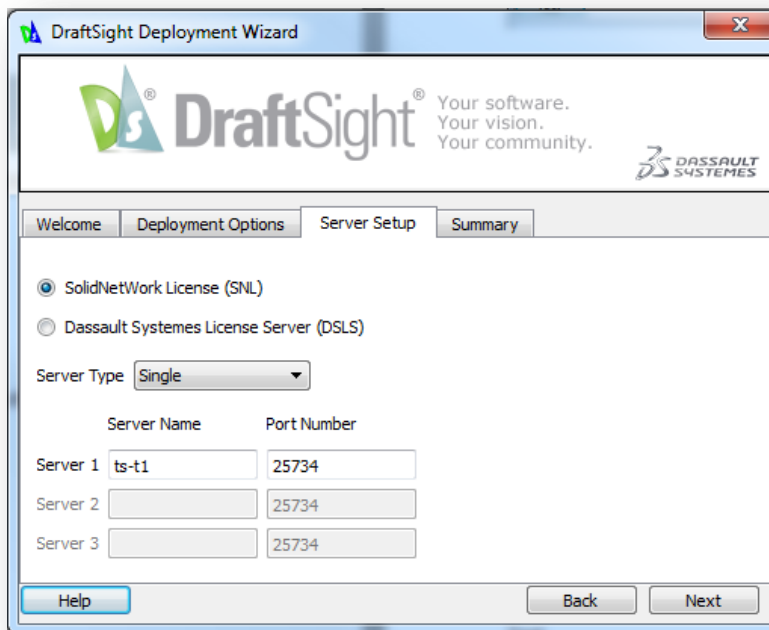
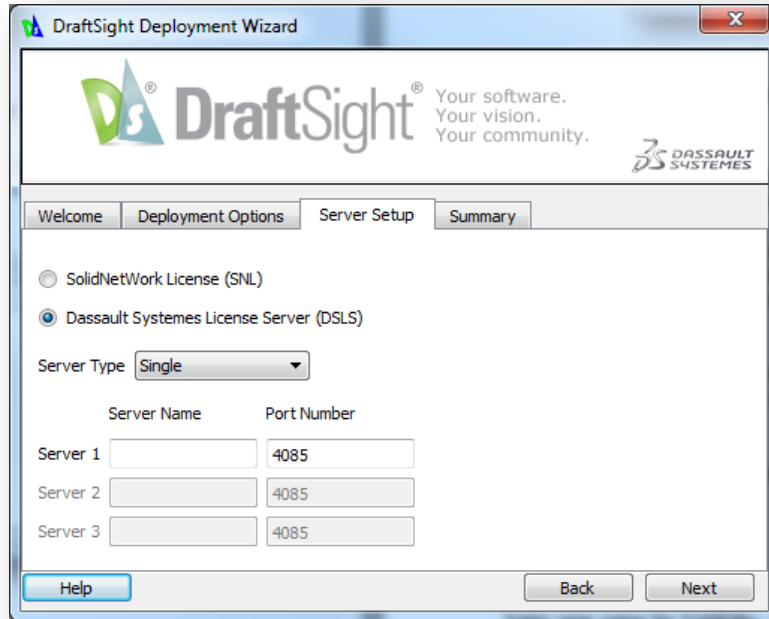


6- In the Welcome screen, Click Next to start the process

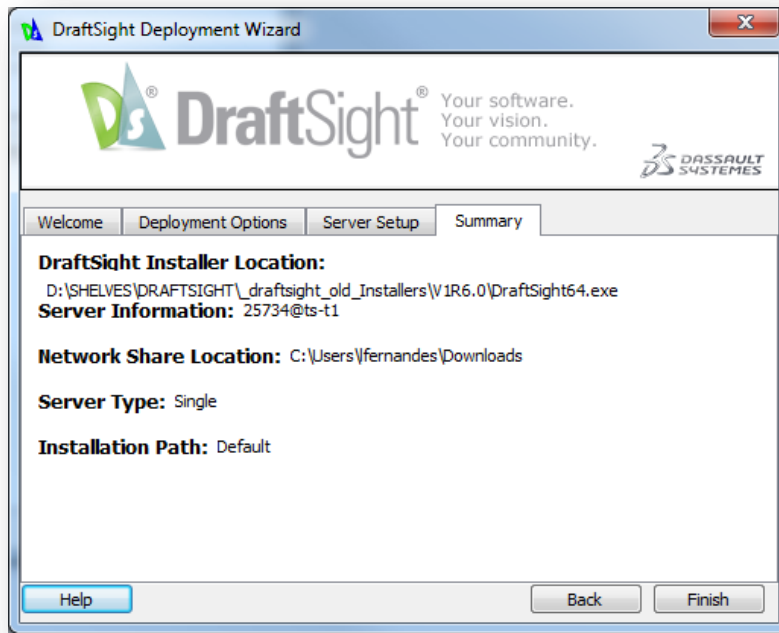


In the Deployment Options Tab, it's where you define

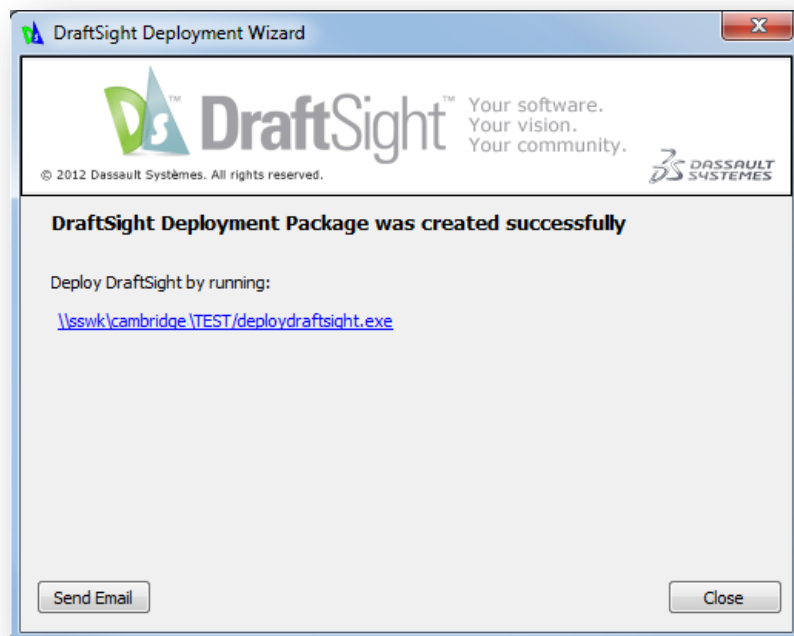
- ▶ DraftSight Installer Location – You will need to browse to the location where the DraftSight installer (previously downloaded) is available. The DraftSight installer will be used in the Deployment Image.
 - ▶ Network Share Location – Location where the Deployment Image will be stored once created. Make sure that all Users can access the specified location.
 - ▶ DraftSight Installation path – The DraftSight installation path in the workstations (by default, C:\Program Files\Dassault Systemes\DraftSight)
- 7- In the Server Setup Tab, you define which License Manager application is used (SNL or DSLs), the Server setup type (Single Server or Cluster), and the Server information (Server name and communication port). Make sure that this information is correct, otherwise the licensing process will fail.



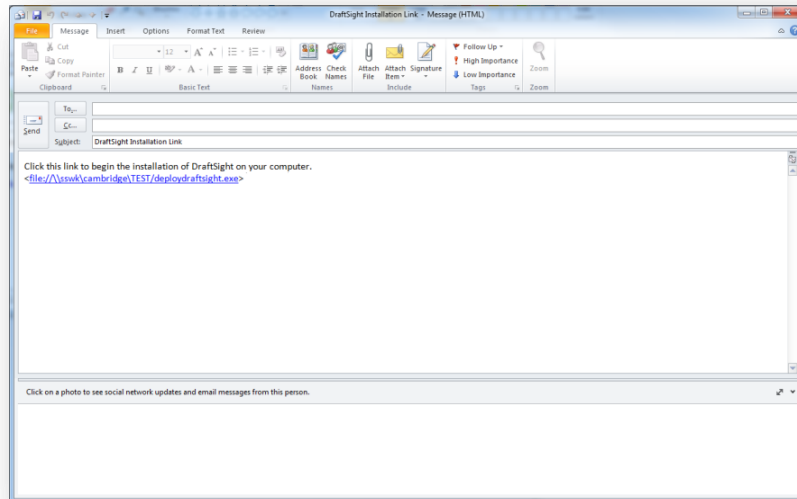
- 8- Clicking “Next”, you will reach the Summary Tab, where you can review the information and chosen Setup for your Deployment Image:



- 9- Clicking “Finish”, the DraftSight Deployment Wizard will begin creating the Deployment Image Package. Once the process is finished, you will be given the option to share/broadcast the link to the executable by email:



This will launch a new email message using your default email application. You can edit this email to your convenience, and send to your users/groups of users.



In order to perform the installation, users will need only to click the link in the email.

2.2. Tips

- ▶ When creating your Network Share, either in one workstation or server, keep accessibility in mind. Keep names short, and in an accessible location on the machine drive (e.g. Root)
- ▶ Create/set the share folder with “full access” rights, to avoid the need to grant those access rights to specific users.
- ▶ Keep in mind the different architectures. DraftSight has available 32-bit and 64-bit specific installers.
- ▶ Make sure the Server Type options data matches the data/information set in your License Manager. Failing to provide the correct information will mean that the workstations cannot reach the Server therefore won't be able to run DraftSight.
- ▶ Verify the communication between Server and Client machines. If necessary, create exceptions for DraftSight in any security software.

Delivering Best-in-Class Products



Virtual Products



3D Design



Realistic Simulation



Digital Manufacturing and Production



Collaborative Innovation



Model and Simulate our Planet



Information Intelligence



Dashboard Intelligence



Social Innovation



3D Communication



3DEXPERIENCE

Dassault Systèmes, the **3DEXPERIENCE** Company, provides business and people with virtual universes to imagine sustainable innovations. Its world-leading solutions transform the way products are designed, produced, and supported. Dassault Systèmes' collaborative solutions foster social innovation, expanding possibilities for the virtual world to improve the real world. The group brings value to over 150,000 customers of all sizes, in all industries, in more than 80 countries. For more information, visit www.3ds.com.

CATIA, SOLIDWORKS, SIMULIA, DELMIA, ENOVIA, GEOVIA, EXALEAD, NETVIBES, 3DSWYM, 3DVIA are registered trademarks of Dassault Systèmes or its subsidiaries in the US and/or other countries.

Europe/Middle East/Africa

Dassault Systèmes
10, rue Marcel Dassault
CS 40501
78946 Vélizy-Villacoublay Cedex
France

Asia-Pacific

Dassault Systèmes
Pier City Shibaura Bldg 10F
3-18-1 Kaigan, Minato-Ku
Tokyo 108-002
Japan

Americas

Dassault Systèmes
175 Wyman Street
Waltham, Massachusetts
02451-1223
USA

Visit us at
3DS.COM

